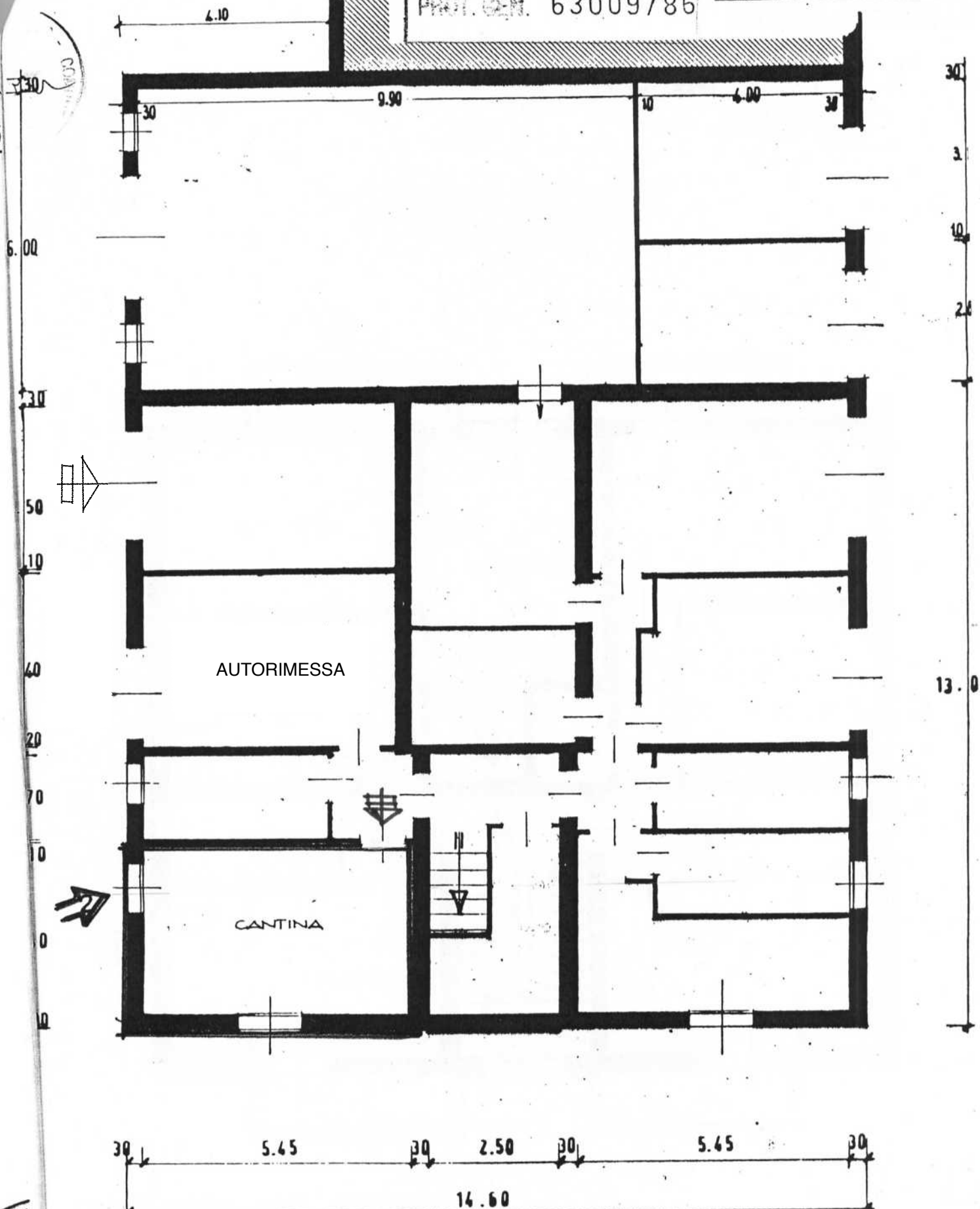


PROT. GEN. 63009/86

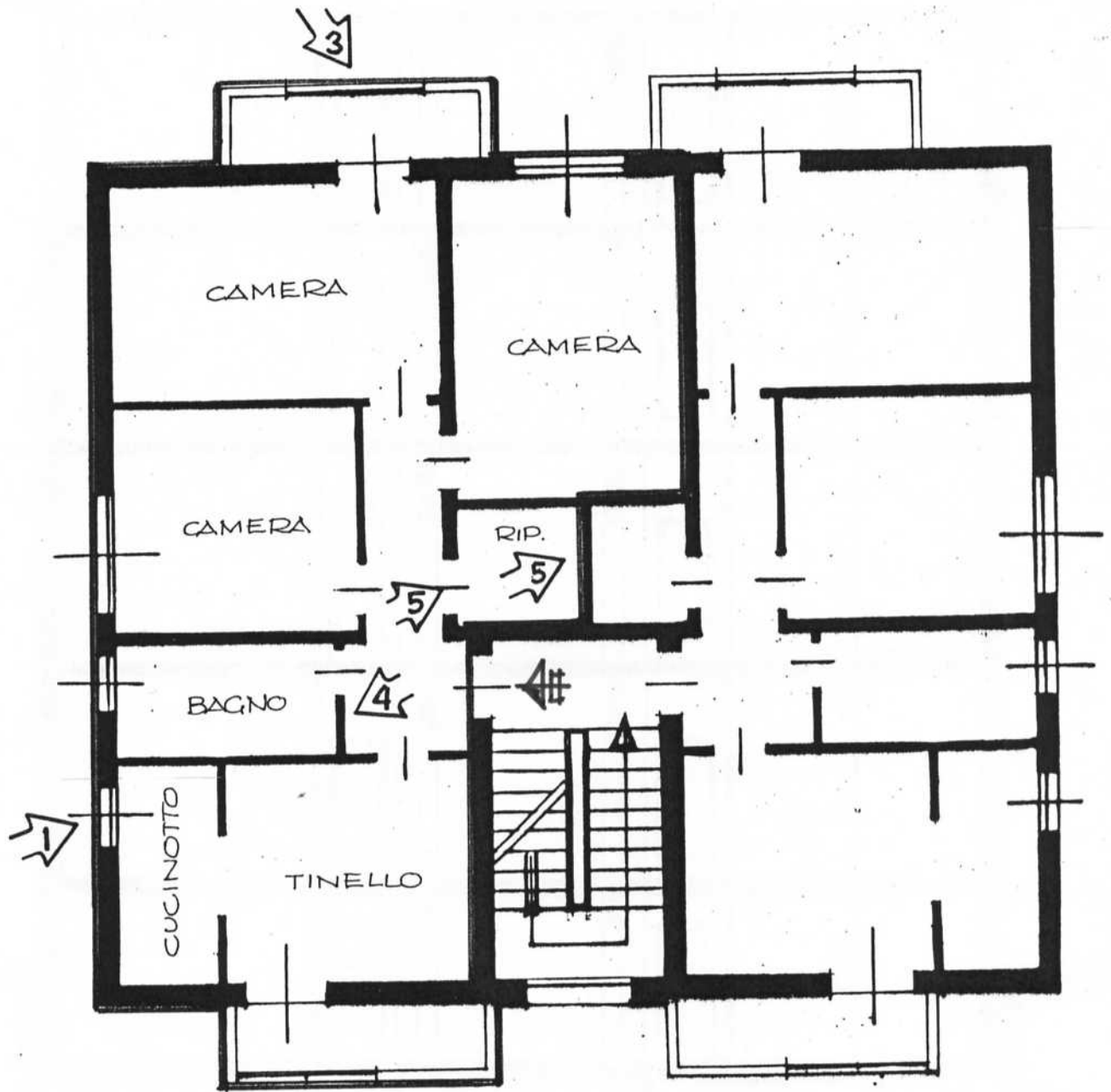
STATO ATTUALE



PIANO SEMINTERRATO

Stampa circolare con testo: "INGEGNERIA e ARCHITETTURA" and "M.A. - N.A. - P.A. - D.P.A." around a central emblem.

PROT. GEN. 63009/85



PIANO TERZO

Stampa circolare con testo illegibile e un logo.